



AJMERA
NUCLEUS

**GRADE 'A' OFFICE SPACE
@ ELECTRONICS CITY, BANGALORE**

ENTRANCE AND ELEVATION RENDERING



ENTRANCE LOBBY VIEW



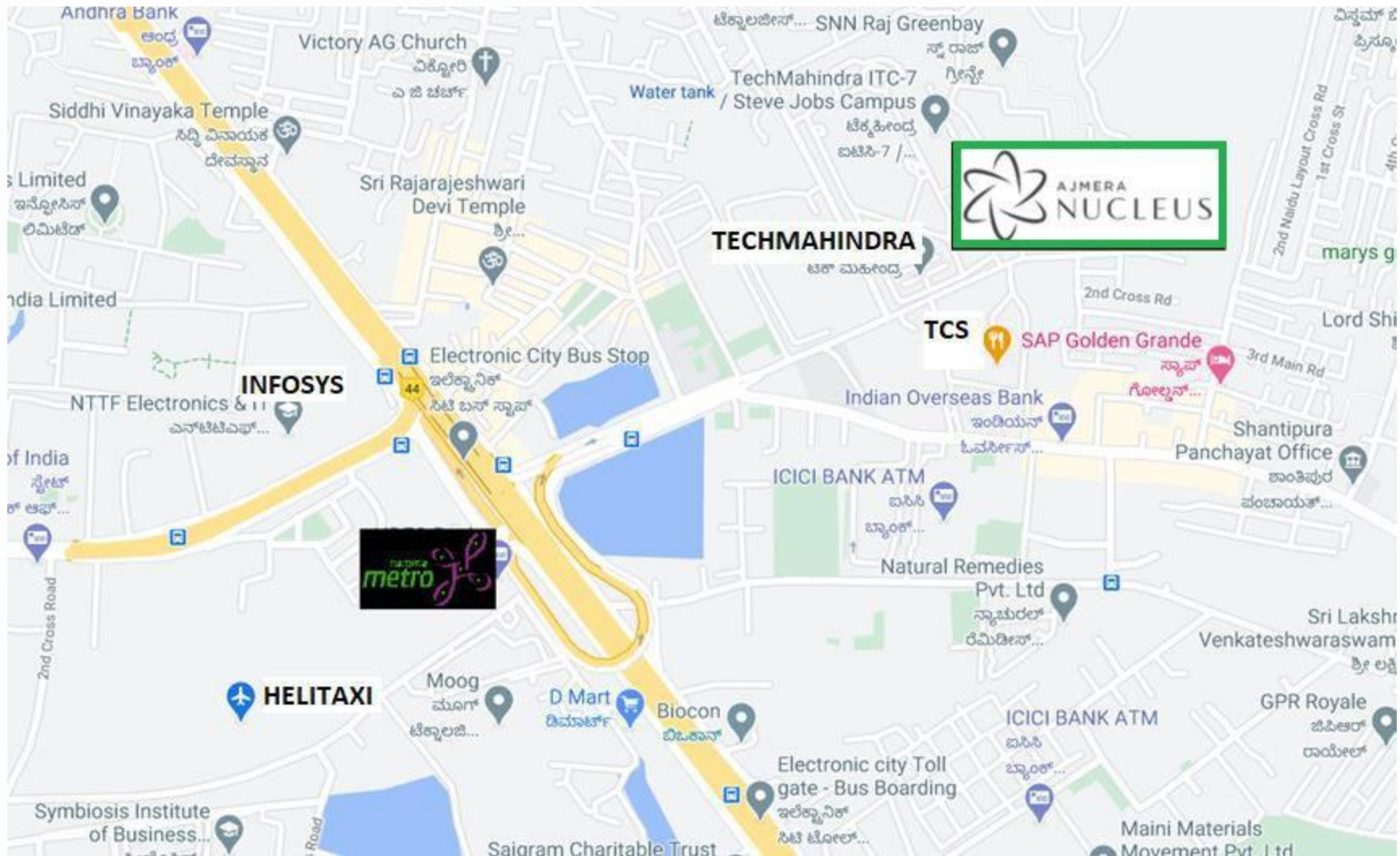
VISITORS LOUNGE PERSPECTIVE



OFFICE FLOOR LIFT LOBBY



LOCATION : ELECTRONICS CITY PHASE 2



KEY DISTANCES



UPCOMING ELECTRONICS CITY METRO STATION	1 KM.
ELECTRONICS CITY BUS STAND	950 MTS.
ELEVATED HIGHWAY TOLL BOOTH	700 MTS.
NICE RING ROAD ENTRY/EXIT	3 KMS.
THE OTERRA - 5 STAR BUSINESS HOTEL	4 KMS.
ZONE BY THE PARK – 4 STAR BUSINESS HOTEL	1 KM.

MASTER PLAN OF OFFICE CAMPUS



PROPERTY DETAILS



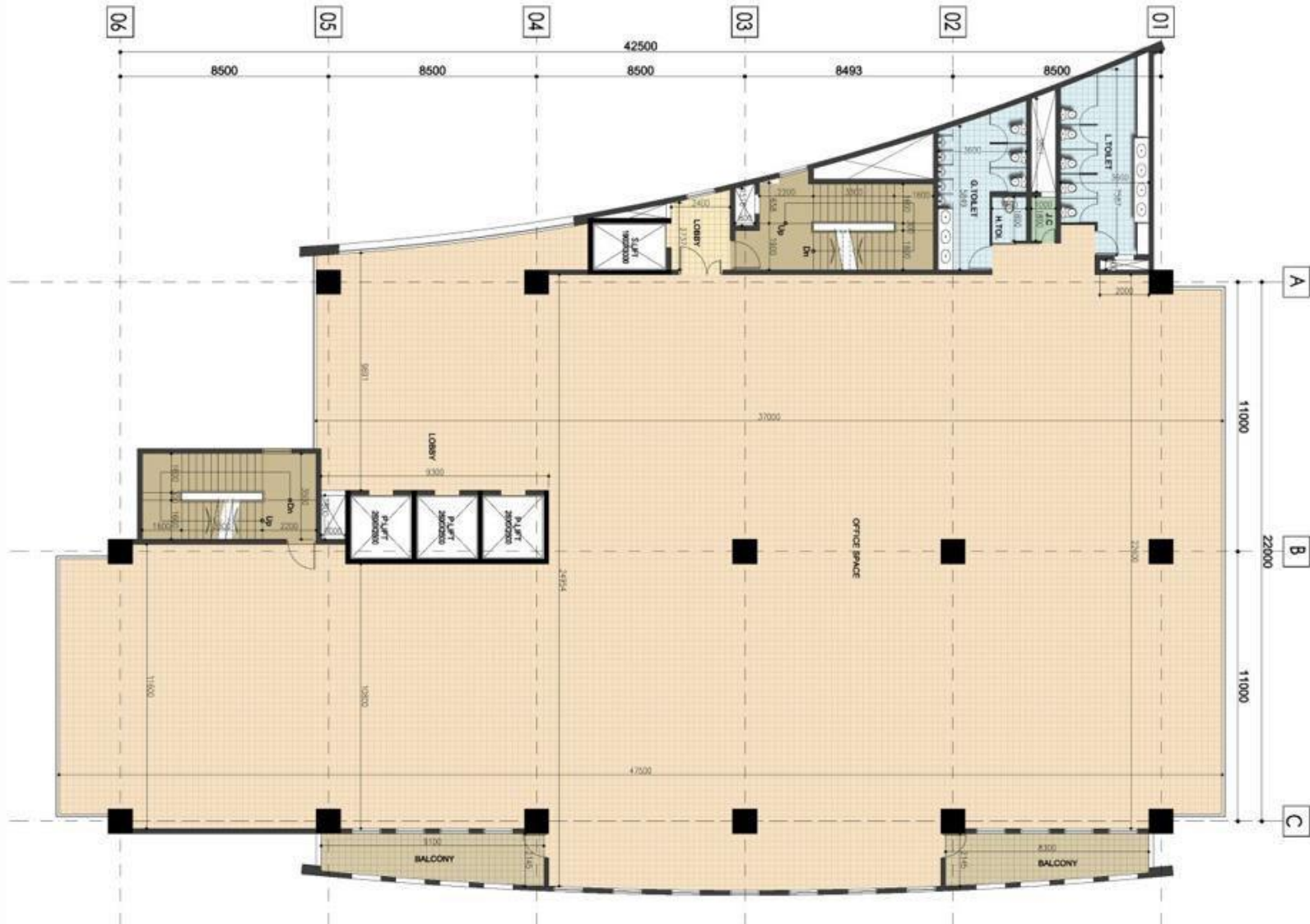
ADDRESS	ELECTRONIC CITY PHASE 2 (NEXT TO TECHMAHINDRA AND TCS) CLICK FOR LOCATION
TOTAL AREA OF OFFICE SPACE	1,27,635 SFT.
TYPICAL AREA OF EACH FLOOR	14,148 SFT.
NO. OF FLOORS	GROUND PLUS 8 FLOORS
ELEVATORS AND STAIRCASE	3 PASSENGER, 1 SERVICE LIFT AND 2 FLIGHTS OF STAIRCASES
CAR PARKING	180 SLOTS IN BASEMENT
WARM SHELL DEFINITION	FINISHED LOBBIES, FLOORING, POWER AND DG BACKUP, HIGH SIDE AC, FINISHED TOILETS, FIRE-FIGHTING SYSTEM
STATUS	OC RECEIVED

PROPOSED OFFICE SPACE AREA STATEMENT



FLOOR	LEASABLE AREA IN SFT.
FIRST FLOOR	12280
SECOND FLOOR	14148
THIRD FLOOR	14148
FOURTH FLOOR	14148
FIFTH FLOOR	14148
SIXTH FLOOR	13275
SEVENTH FLOOR	14148
EIGHTH FLOOR	14148

TYPICAL FLOOR PLAN – 14,148 SFT.





ACTUAL PHOTO



ACTUAL PHOTO



THANK YOU

DISCLAIMER : The contents, specifications and illustrations in the presentation are subject to change.
E&OE